

Report for: Glenise McLaughlin

Glenbrook Wholistic Health Centre
12b Ross Street,
Glenbrook

NSW 2774 Australia

NSW 2773

Ph: 024739 5176 Australia

Ph:

Email:

Prepared by: Glenise McLaughlin B HSc.,ND, Dip Hom,

Web:

Resistance: 540.6

Height (cm): 165

Reactance: 56.8

Gender: Female

Body Composition

Ideal Weight (kg): 66.27

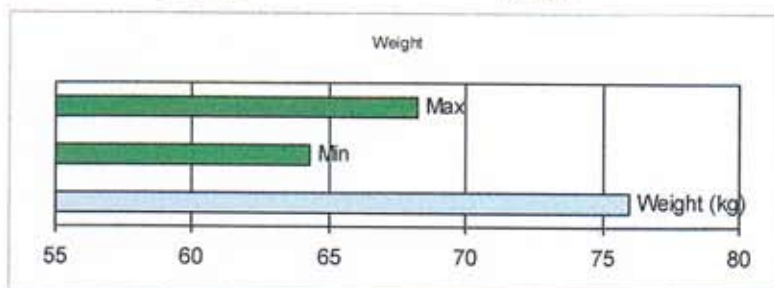
Weight (kg): 76.00

Skeletal Tissue (kg): 7.95

Ideal ECW (litres): 14.58

Frame Size: Large

Body Mass Index: 27.92



Fat Mass

Fat (kg): 30.66

Ideal Fat Mass (kg): 19.22

% of Total Weight: 40.35%

% of Ideal Fat Mass: 159.55%

Difference from Ideal (kg): 11.44



Active Tissue Mass

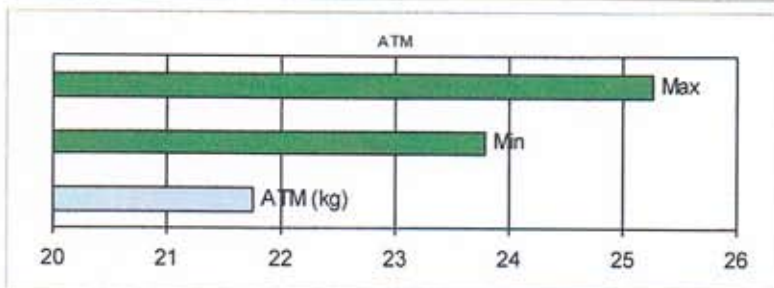
ATM (kg): 21.76

Ideal ATM (kg): 24.52

% of Total Weight: 28.63%

% of Ideal ATM: 88.75%

Difference from Ideal (kg): -2.76



Optimal Health Indicators

Phase Angle: 6.00

% of Avg. Phase Angle: 99.97%

ATM Quality Index: 0.85

Cellular Fluid Balance: 3.43

Patient Age: 51

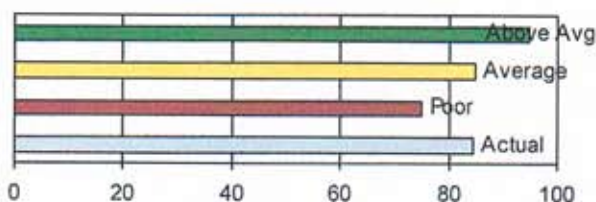
Biomarker Index: 60.21

Fat Distribution Index: High Risk

Fat Muscle Ratio: 1.41

Basal Metabolic Rate: 1425.40

ATM Quality Index



Cellular Fluid Balance

